

## Short Report



Edwin Scharff museum Neu-Ulm | ©Edwin Scharff Museum

## Edwin Scharff museum Neu-Ulm

Petrusplatz 4  
89231 Neu-Ulm

Tel: +49(0)731-70502520

esm@neu-ulm.de  
[www.edwinscharffmuseum.de](http://www.edwinscharffmuseum.de)

### Welcome!

The Edwin Scharff Museum is located in Neu-Ulm and is a house for art lovers as well as for children and families. It combines an art museum with permanent and special exhibitions and a children's museum under one roof.

The permanent exhibitions are dedicated to the painter, graphic artist and sculptor Edwin Scharff, who was born in Neu-Ulm, and to Ernst Geitlinger, the pioneer of non-objective art in Germany. For more information, visit <https://edwinscharffmuseum.de/en/about-the-museum/>.

# TEST RESULT

---

for

## Edwin Scharff Museum Neu-Ulm

89231 Neu-Ulm, Certificate-ID: PA-12125-2021



This offer was classified according to  
the criteria of the nationwide label

**»Tourism for All«**

and, in the period from

**December 2021 – November 2024**

is entitled to use the label

**»Accessibility checked«**

and the associated pictograms

in accordance with the contract.

## Overview

- Art museum with permanent and special exhibitions
- Children's museum with many experimentation and hands-on stations
- Guided tours
- Gastronomy: Museum café on Petrusplatz – Inclusion café run by the Lebenshilfe organisation
- Charging facility for an electric wheelchair in the café
- Museum shop
- Media guide (German/English)

## Accessibility at a glance

- Underground car park with parking spaces for people with disabilities.
- All rooms and facilities that can be used and raised for guests are accessible without steps or via a lift.
- Passages and doors are at least 89 cm wide (exception: one room in the atrium with a passage width of 85 cm).
- The exhibits are predominantly visible, perceptible and recognisable while seated.
- The following aids are available: Wheelchair, rollator
- Media guides in easy language, audio tracks for visually impaired and blind people, tour with videos for deaf people.
- Public WC for people with disabilities
- Assistance dogs allowed
- Tactile orientation plan

# Information for people with walking difficulties and wheelchair users

All areas relevant for testing meet the quality criteria of the label "**Accessibility certified – partially accessible for people with walking disabilities and wheelchair users**".

Some **information on accessibility** are listed below. For detailed information please see the evaluation report.

- The underground car park with parking spaces for people with disabilities is located directly at Petrusplatz.
- The bus stop "Petrusplatz" is approx. 200 m from the entrance.
- The entrance is step-free (max. 2 cm threshold, if necessary via a ramp).
- All rooms and facilities that can be used and raised for the guest are accessible without steps or via a lift.
- The lift cars are at least 108 cm x 138. The lift doors are at least 89 cm wide. There is a horizontal control panel.
- Passages and doors are at least 89 cm wide (exception: one room in the atbau with a passage width of 85 cm).
- The counter of the cash desk and information desk is 81 cm high at the lowest point.
- The exhibits are predominantly visible, perceptible and recognisable while seated.
- The information on the exhibits can mainly be read while sitting down.'
- In the museum café there are 11 accessible tables (maximum height 80 cm, accessible at a height of 67 cm with a depth of 30 cm).
- The following aids are available: Wheelchair, rollator

## Public toilet (new building, basement)

- The manoeuvring spaces are  
in front of the washbasin 193 cm x 116 cm;  
in front of the toilet 116 cm x 193 cm;  
to the left of the toilet 34 cm x 72 cm;  
to the right of the toilet 103 cm x 72 cm.
- There are grab rails to the left and right of the toilet .
- The washbasin is accessible from underneath at a height of 67 cm and a depth of less than 30 cm.
- The mirror can be viewed while sitting or standing.
- There is a cord as an alarm trigger.

## Public toilet (old building, museum café)

- The manoeuvring spaces are  
in front of the washbasin 200 cm x 141 cm;  
in front of the toilet 141 cm x 200 cm;  
to the left of the toilet 72 cm x 71 cm;

to the right of the toilet 96 cm x 71 cm.

- There are grab rails to the left and right of the toilet .
- Both grab rails can be folded up.
- The washbasin is accessible from underneath at a height of 67 cm and a depth of at least 30 cm'.
- The mirror can be viewed while sitting or standing.
- There is a cord as an alarm trigger.

## Information for people with hearing impairments and deaf people

All areas relevant for testing meet the quality criteria of the label "**Accessibility certified – partially accessible for deaf people**".

Some **information on accessibility** are listed below. For detailed information please see the evaluation report.

- There is no audio induction loop system available.
- In the event of an acoustic alarm (e.g. fire alarm), there is no visually clearly perceptible flashing or blinking signal.
- An outgoing emergency call in the lift is confirmed acoustically, e.g. by an intercom system.
- In the museum café, there are tables with bright and glare-free lighting where there are no lamps standing or hanging that interfere with the field of vision or eye contact. There are tables with low ambient noise.
- There is a media guide with a tour with videos in German for deaf people.

## Information for visually impaired and blind people

All areas relevant for testing meet the quality criteria of the label "**Accessibility certified – partially accessible for people with visual impairments and partially accessible for blind people**".

Some **information on accessibility** are listed below. For detailed information please see the evaluation report.

- Assistance dogs (companion dogs, guide dogs for the blind, etc.) may be brought into all relevant areas/rooms of the establishment/offerings.
- The entrance area is recognisable by a tactilely perceptible change of flooring, but not visually contrasting with the surroundings.

- A tactile orientation plan provides an initial overview of the layout of the establishment at the checkout.
- There are no visually contrasting or tactile floor indicators.
- All raised areas that can be used by the guest (entrance area, cash desk/counter, bedrooms, corridors, hallways) are well lit, i.e. bright and glare-free.
- An outgoing emergency call in the lift is confirmed acoustically, e.g. by an intercom system. The stop position is announced by voice in the lift in the old building. The operating elements are designed to be visually contrasting and tactilely detectable.
- Stairs have visually contrasting edges at least on the first and last step. Stairs have at least one handrail on one side.
- There is predominantly a visual contrast between the exhibits and the surroundings.
- Exhibits are generally well lit.
- Exhibit signage is predominantly visually contrasting. (Yes, No)
- Information that serves orientation and consists of words is designed in legible writing. There is good visual contrast between the lettering/pictogram and the background.
- There is a media guide with an audio tour for blind and visually impaired people.
- There is a tactile brochure in the exhibition on Edwin Scharff.

## Information for guests with cognitive impairments

Some **information on accessibility** are listed below. For detailed information please see the evaluation report.

- The name or logo of the facility is clearly recognisable from the outside.
- The cash desk / information counter is directly visible from the entrance door.
- There is information in plain language (brochure).
- A media guide with an audio tour in plain language is available.
- There is information about the museum in plain language on the website.
- Guided tours are offered (for groups with advance booking).



# Image Gallery

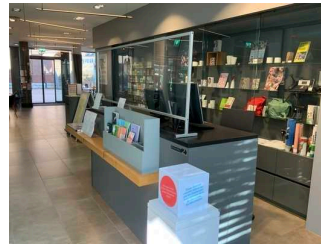
We have put together some photos from the company / offer for you. You can find more photos in the detailed reports.

---



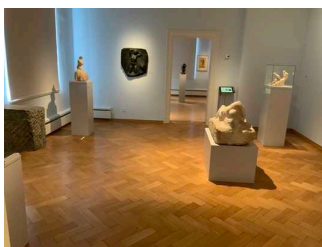
Entrance museum and café

©Angelika Herrmann



Ground floor: Cash desk / Shop

©Angelika Herrmann



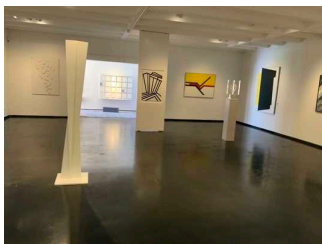
Old building – ground floor: art exhibitions

©Angelika Herrmann



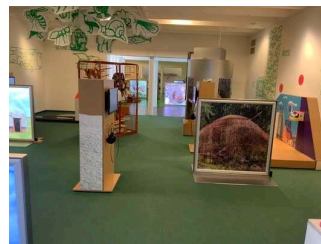
Old building – 1st floor: special exhibition

©Angelika Herrmann



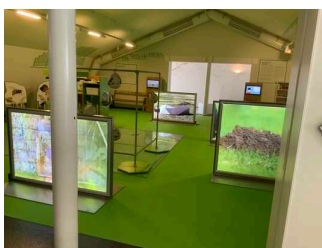
New building – 1st floor: art exhibitions

©Angelika Herrmann



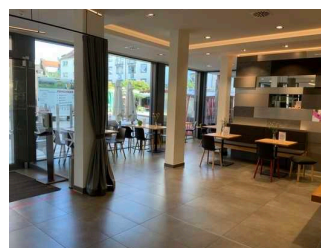
New building – 2nd floor: children's museum

©Angelika Herrmann



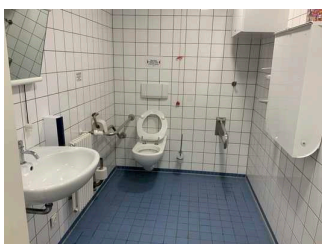
New building – 3rd floor: children's museum

©Angelika Herrmann



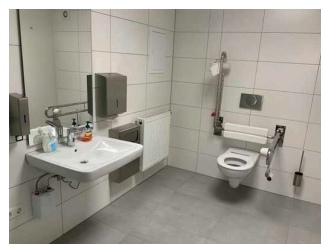
Ground floor: museum café

©Angelika Herrmann



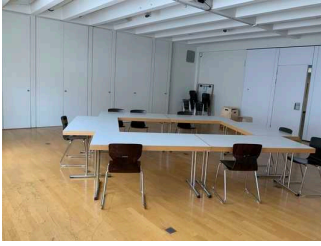
New building – basement: public toilet

©Angelika Herrmann



Ground floor – museum café: public toilet

©Angelika Herrmann



## New building – 1st floor: lecture hall

©Angelika Herrmann

---



## Information on the "Tourism for All" labeling system

All establishments and locations certified with the label "Tourism for All" meet the following quality criteria:

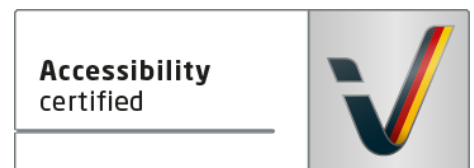
- Data and information on accessibility are collected and checked on site by **external, specially trained evaluators**. The method is not based on self-assessments.
- Data on accessibility is available **in detail** and can be viewed by the guests.
- At least one staff member has successfully passed a **training** on "**Accessibility as a comfort and quality feature**".

### The labeling – explanation of the logos and pictograms

The label "**Information about Accessibility**" indicates that detailed and verified information on accessibility is available for all groups of people.



The label "**Accessibility certified**" is based on "Information about Accessibility". It means that the quality criteria defined for specific groups of people are met partially or completely.



The label "**Accessibility certified**" is available in two requirement levels:

#### "Accessibility certified: partially accessible".

The quality criteria are partially fulfilled for the pictured group of people, i.e. the establishment/location is partially accessible for wheelchair users. The "i" in the pictogram indicates that it is recommended to read again carefully whether the offer meets all (your oder the guest's) individual requirements.



#### "Accessibility certified: accessible".

The quality criteria are fulfilled for the pictured group of people, i.e. the establishment/location is accessible for wheelchair users.



There are defined quality criteria for **seven groups of people** and a **specific pictogram** for each group.

People with walking disabilities



Wheelchair users



People with hearing impairment



Deaf people



People with visual impairments



Blind people



People with cognitive impairments

